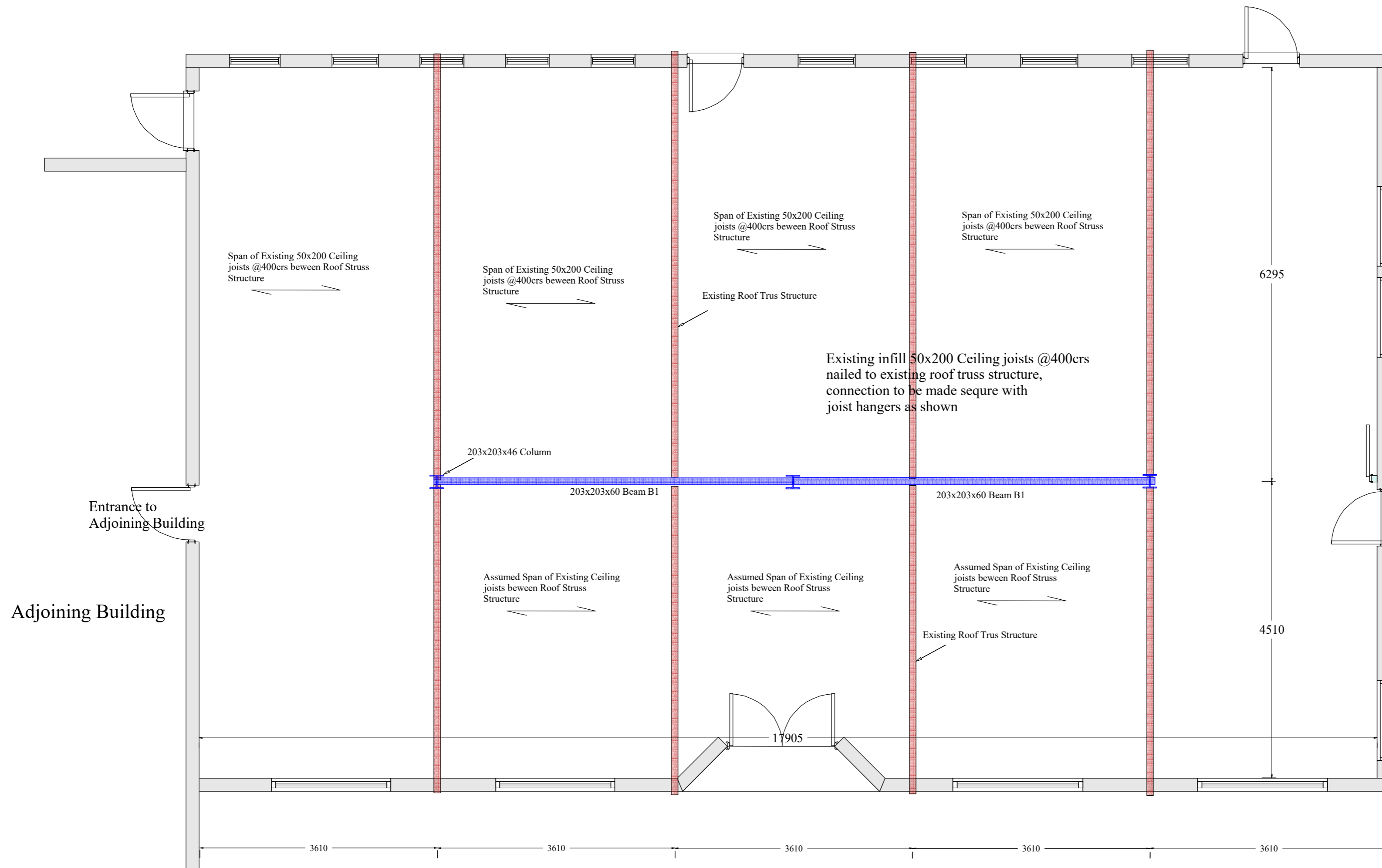
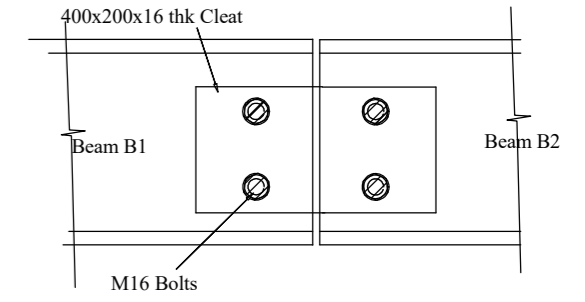


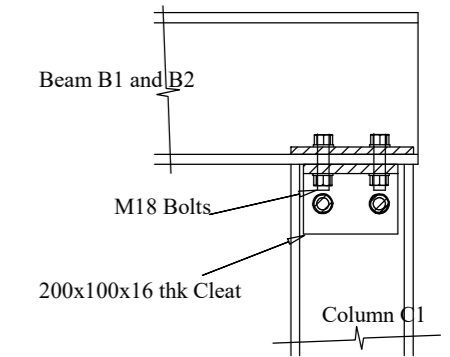
Car Park



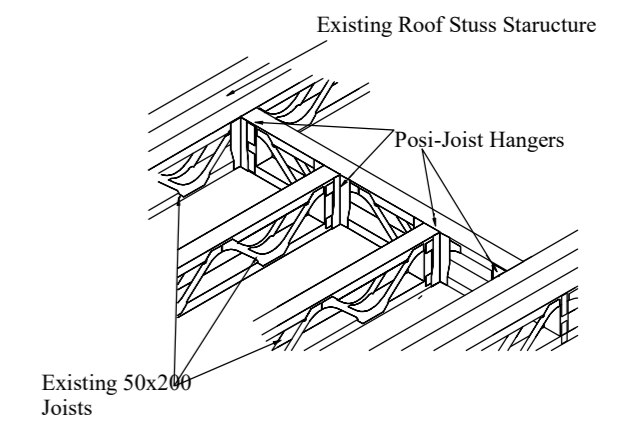
CEILING LEVEL PLAN



CONNECTION DETAIL D1



CONNECTION DETAIL D2



CONNECTION DETAIL D3

Notes:
1 Refer Drawing No B201 for Notes

Revision	Description	Date

Project: Sri Guru Singh Sabha
Park Avenue, Southall

Project Title:
Removal of internal Timber walls and Support to Roof Structure

Drawing No: B204	Revision:
Date: July 2024	Drawn by: AS
Scale: 1/50 @A2	Chkd by: MK